

Ormco

symetri[™]
CLEAR

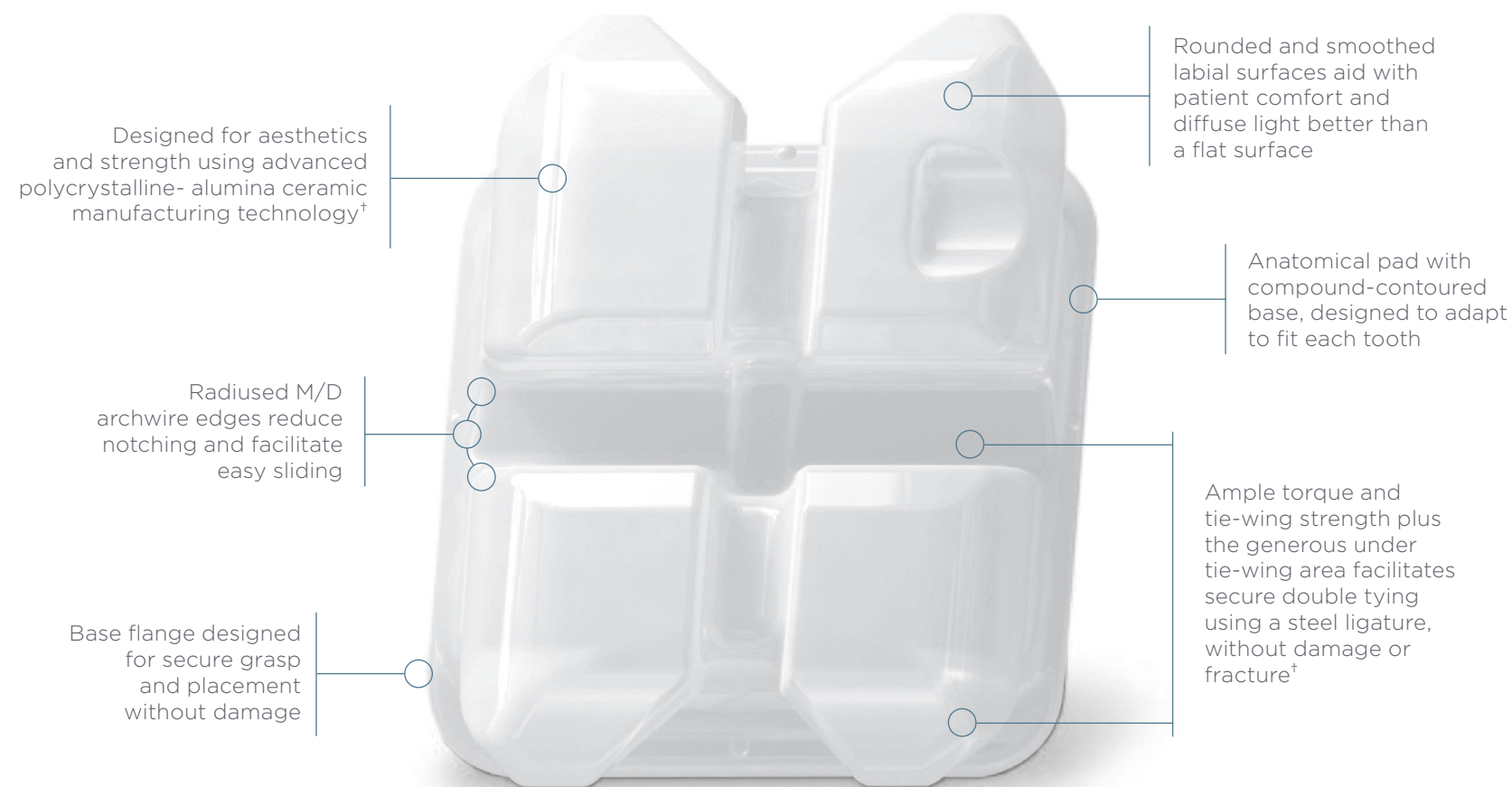
Refined Strength | Advanced Aesthetics | Easy Debonding





Advanced Aesthetic Bracket

Symetri Clear is an advanced aesthetic bracket designed for refined strength, patient comfort and easy/safe debonding without fracturing.



[†]Data on file.

Experience the Debond

Symetri Clear's proprietary base design and patented debonding plier enable safe, easy, and non-destructive removal of the bracket. The bracket comes off the tooth in one piece and with minimal force.¹

The surface of the base is designed so that the bracket lifts off the enamel with minimal force and in one piece without fracturing the bracket^{††}



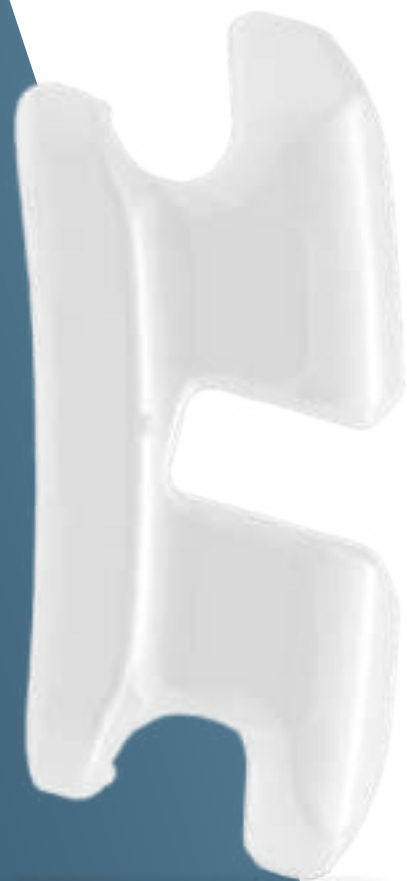
Proprietary laser etched pad technology designed to increase the reliability of the bonding surface

Anatomical pad with compound-contoured base designed to fit each tooth

¹Using Symetri Clear Debonding Instrument.
^{††}Data on file.

Designed for Patients & Doctors

Symetri Clear is an aesthetic bracket designed for patient comfort with features that meet clinical demands. The smooth surfaces and low profile are designed to minimize occlusal interferences allowing for bonding of both upper and lower arches.

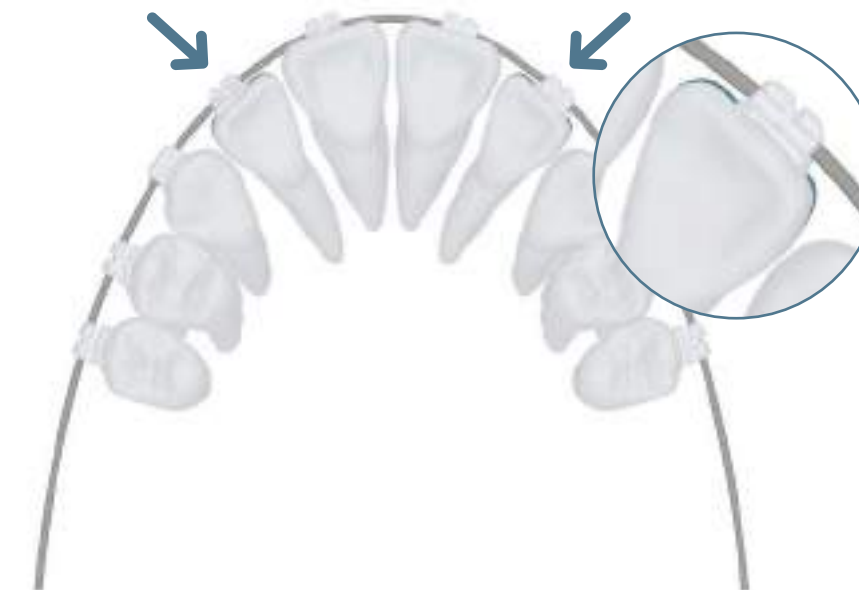


- Chamfered slot for easy wire insertion
- Rounded slot edges minimize notching and facilitate easy sliding
- The rounded contours and shape of the tie wings means smoother surfaces to aid in patient comfort
- The bracket's low profile means less chance of coming into contact with the opposing enamel
- Low profile for aesthetics and to minimize occlusal interference



Uniquely Optimized In/Out Dimensions

Only from Ormco, Symetri Clear is available with both standard and Slim In/Out dimensions for the maxillary laterals. Ormco's proprietary Slim In/Out dimension is designed to align the incisal edges of the centrals, laterals, and cuspids, which may result in fewer wire bends and improved finishes.**



**Computer simulated data on file.



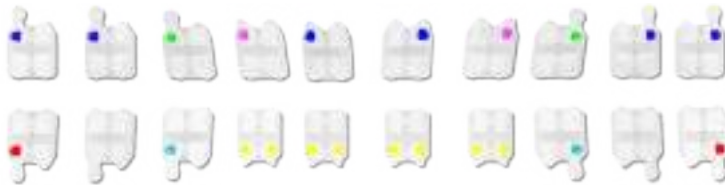
symetri™
CLEAR

Contact your Ormco
representative at 888.854.1741
or visit ormco.com/symetri
to learn more.

tooth	torque	ang	rot	bracket type	part numbers			
MAXILLARY					.018 L	.018 R	.022 L	.022 R
Central	+17°	4°	0°	twin	418-1111	418-1110	419-1111	419-1110
Lateral	+10°	8°	0°	twin	418-1211	418-1210	419-1211	419-1210
Lateral - Optional Slim In/Out	+10°	8°	0°	twin	418-1213	418-1212	419-1213	419-1212
Cuspid	0°	8°	0°	twin	418-1311	418-1310	419-1311	419-1310
Cuspid - Hook	0°	8°	0°	twin	418-2311	418-2310	419-2311	419-2310
Bicuspid	-7°	0°	0°	twin	418-1510		419-1510	
Bicuspid - Hook	-7°	0°	0°	twin	418-2511	418-2510	419-2511	419-2510
MANDIBULAR					.018 L	.018 R	.022 L	.022 R
Anterior	-6°	0°	0°	twin	418-1010		419-1010	
Cuspid	0°	3°	2°	twin	418-1411	418-1410	419-1411	419-1410
Cuspid - Hook	0°	3°	2°	twin	418-2411	418-2410	419-2411	419-2410
1st Bicuspid	-12°	0°	0°	twin	418-1610		419-1610	
1st Bicuspid - Hook	-12°	2°	0°	twin	418-2611	418-2610	419-2611	419-2610
2nd Bicuspid	-17°	0°	0°	twin	418-1710		419-1710	
2nd Bicuspid - Hook	-17°	2°	0°	twin	418-2711	418-2710	419-2711	419-2710

Single Patient Kits		.018	.022
Symetri Clear Upper/Lower 5-5 With Hooks 3-4-5	twin	746-2101	746-2201
Symetri Clear Upper/Lower 3-3 With Hooks on 3	twin	746-2102	746-2202
Symetri Clear Upper 3-3 With Hooks on 3	twin	746-2103	746-2203
Symetri Clear Upper 5-5 With Hooks on 3	twin	746-2105	746-2205
Symetri Clear Upper 5-5 With Hooks 3-4-5	twin	746-2106	746-2206

Symetri Clear Debonding Instrument	866-4025
Symetri Clear Typodont	717-0021





Contact your Ormco representative at 888.854.1741
Visit ormco.com/symetri to learn more.

Twins | Digital | Auxiliaries | Practice Development | Education
Self Ligation | Aligners | Tubes/Bands | Archwires | Lab Products

© 2019 Ormco Corporation

Ormco

Ormco Corporation
1332 South Lone Hill Avenue | Glendora, CA 91740 USA
ormco.com | 800-854-1741

070-5783 Rev. A
2018-02-08